

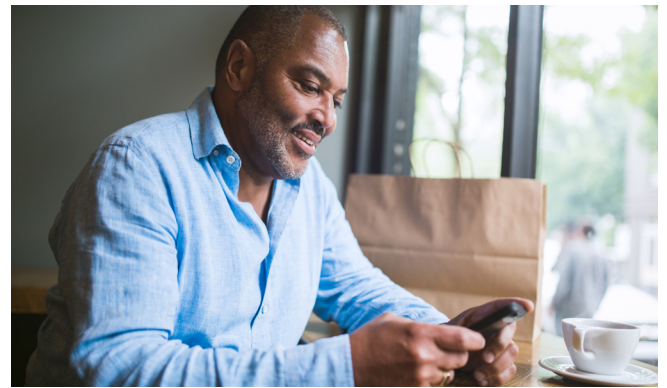
## HOME LOAN PRE-APPROVAL

Set yourself up for a successful homebuying experience by making sure your financing is in place ahead of time. Before you start house hunting, visit [alaskausamortgage.com](http://alaskausamortgage.com). Apply online, or set up an appointment with a home loan expert to help you find a mortgage that fits your lifestyle.



## NEW FRAUD NOTIFICATIONS

Preventing card fraud is a top priority for Alaska USA. In addition to phone call notifications, you may now receive a text message notifying you of potentially fraudulent card transactions. To update your contact information and ensure you receive these alerts, please log in to your online account, visit any branch, or call the 24/7 Member Service Center at (800) 525-9094.



## MEMBERS MAKING CHANGE

Since 2003, the Alaska USA Foundation has raised and distributed more than \$1.5 million to organizations that support children, veterans, and military families. Donate today online at [alaskausafoundation.org](http://alaskausafoundation.org) or at any Alaska USA branch location. 100% of your donation goes to qualified 501(c)(3) organizations.



## AlaskaUSA®

### CONTACT INFORMATION

- **Alaska USA Federal Credit Union** | [alaskausa.org](http://alaskausa.org) | (800) 525-9094  
TTY/Hearing Impaired (800) 742-7084 | P.O. Box 196613, Anchorage, AK 99519-6613
- **Alaska USA Insurance Brokers** | [alaskausa.org/insurance](http://alaskausa.org/insurance) | (800) 478-1251
- **Alaska USA Mortgage Company** | [alaskausamortgage.com](http://alaskausamortgage.com) | (800) 737-3033

Mortgage loans are provided by Alaska USA Federal Credit Union in Arizona. Mortgage loans are provided by Alaska USA Mortgage Company, LLC in Alaska, Washington, and California. License #AK157293; Washington Consumer Loan Company License #CL-157293; Licensed by the Department of Business Oversight under the California Residential Mortgage Lending Act, License #4131067

### BOARD OF DIRECTORS

- Bobby W. Alexander, Chairman
- Kenneth D. Campbell, 1st Vice Chairman
- Ronald E. Lee, 2nd Vice Chairman
- Gary L. Sholly, Secretary/Treasurer
- Kent B. Berthiaume
- Lorrain J. Skinner
- Geri M. Wacker

### SUPERVISORY COMMITTEE

- Kent B. Berthiaume, Chairman
- Craig S. Wood, Secretary
- Richard F. Hawley
- Willard Lacy
- RaeDene K. Turner



## Member STORIES

*When I arrived at Elmendorf Air Force Base on assignment with the Air Force in September 1981, I joined Alaska USA. I got out of the military and remained in Anchorage until my wife and I retired and moved to Florida in 2012. Alaska USA financed five automobiles, three boats, and a home. I now live in Florida, but my primary financial institution is still Alaska USA, and will be for many years to come.*

– Ed C. | Weeki Wachee, FL

*I joined Alaska USA when I got stationed at Elmendorf Air Force Base in '75. When I left two years later, I decided to keep the account – and I'm so glad I did! Fantastic customer service, no matter where in the world I was stationed during my 24-year Air Force career. Now, living in Ohio, I still depend on Alaska USA and will continue to forever. Thanks for being there, and for all your support!*

–Gail D. | Richwood, OH

## 2017 ELECTION INFORMATION

Each year, Alaska USA members are elected to serve designated terms as volunteer members of the Board of Directors.

As no members qualified as candidates by the petition method, the slate of candidates is as follows:

### BOARD OF DIRECTORS

#### 3 three-year term positions

Kenneth D. Campbell

Ronald E. Lee

Gary L. Sholly

#### 1 one-year term position

Kent B. Berthiaume

Since these candidates are running unopposed, their election will be declared and announced at the annual meeting.

## BRANCH SCHEDULE

Alaska USA has 86 conveniently located branches in Alaska, Arizona, California, and Washington State. Many branches are open on weekends and holidays, except Thanksgiving, Christmas Day, and New Year's Day.

Visit [alaskausa.org/branches](http://alaskausa.org/branches) for hours and locations, or call the Member Service Center, 24/7, 365 days a year at (800) 525-9094.

86  
branches  
and counting!



## ANNUAL MEETING

June 21, 2017 | 6 pm

Sheraton Anchorage Hotel, Anchorage, AK

The 2016 Annual Report will be available in May and can be obtained at any branch, online, or by calling the Member Service Center.

## FEATURED RATES

SHARE RATES	APY*
Share Savings .....	0.10%
Premium Savings .....	0.20%
Investor Checking \$1,000 + .....	0.05%
Money Market \$2,500 + .....	0.15%
Super Money Market \$10,000-\$24,999.....	0.20%
Super Money Market \$25,000 + .....	0.25%
Certificates .....	0.20% to 2.15%

LOAN RATES	APR**
New & Used Auto and Truck.....	as low as 2.90%
Recreational Vehicle .....	as low as 4.75%
Motorcycle or Off-road Vehicle .....	as low as 3.25%
Boats and Vessels .....	as low as 5.00%
Platinum Credit Card .....	10.50-14.50%

Rates as of March 15, 2017 and subject to change. Please call or visit [alaskausa.org](http://alaskausa.org) for current rates. \* Annual Percentage Yield (APY). \*\* Annual Percentage Rate on approval of credit.